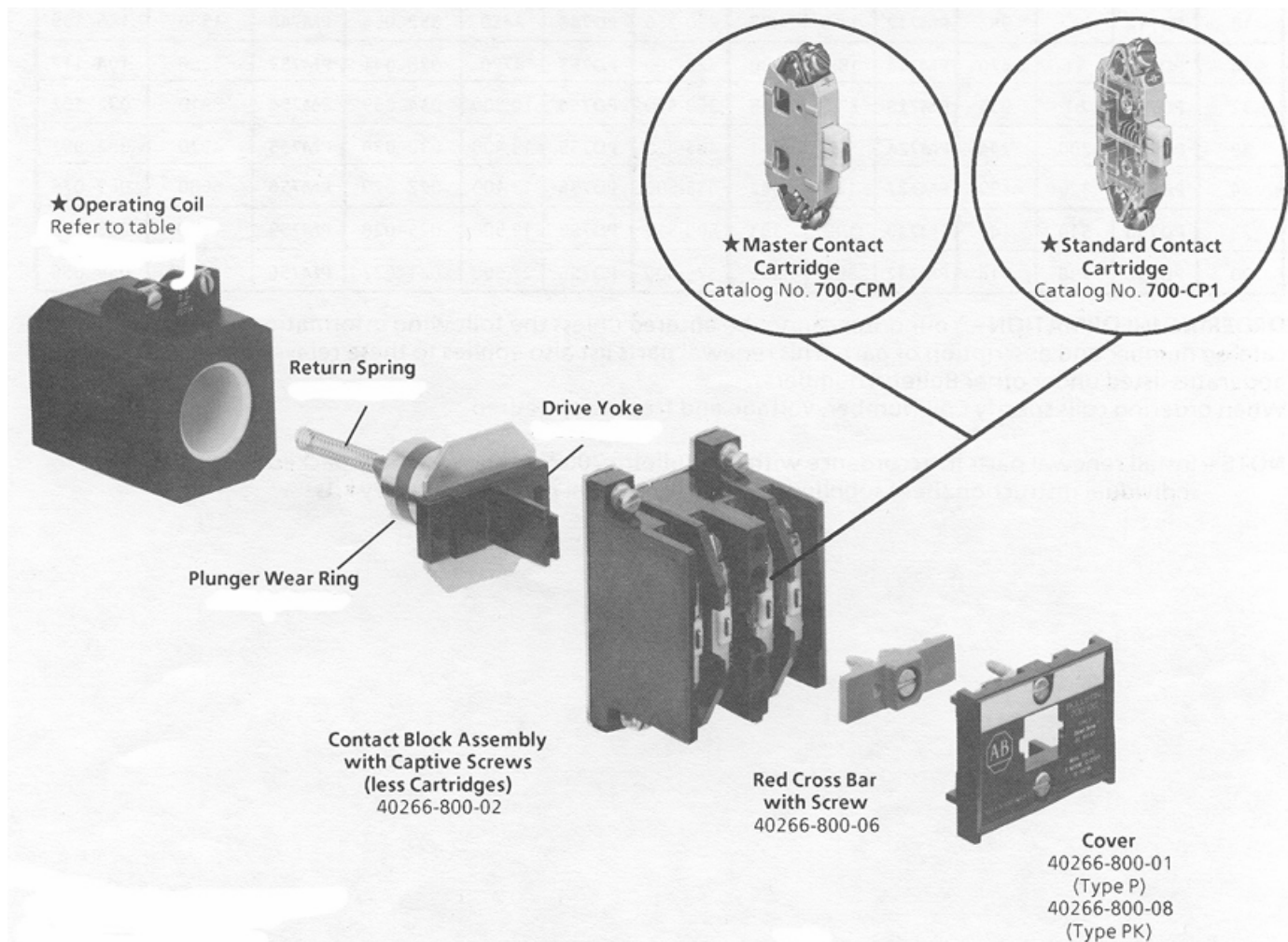


700 Type P & PK DC Relays – Timer Units – Latch Units Series A and B Construction

Renewal Parts

Figure 1



Renewal Parts

700 Type P & PK DC Relays

Repair Parts for Page 1, Figure 1

All part numbers apply to both 700P and 700PK DC relays unless otherwise indicated.

** = indicates coil voltage suffix code

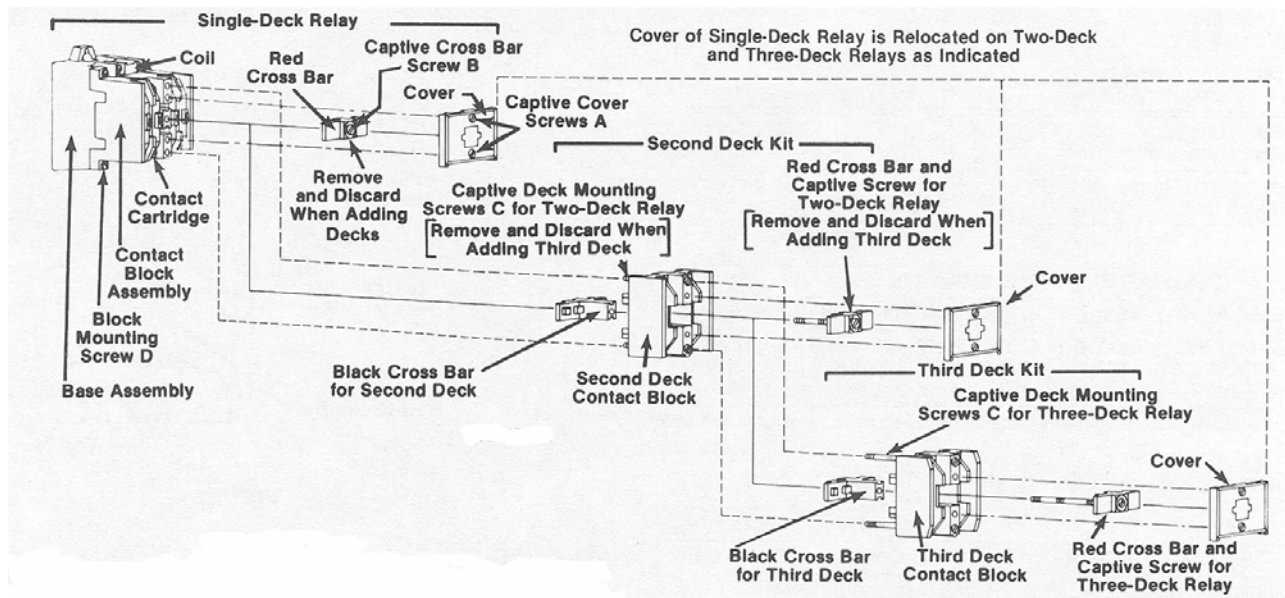
Part Description	AB Part Number	
	Series A	Series B
Operating Coil	See coil table	See coil table
Master Contact Cartridge	700-CPM	700-CPM
Standard Contact Cartridge	700-CP1	700-CP1
Plunger Assembly including return spring, drive yoke, plunger, plunger wear ring	40266-802-01	40266-802-01
Contact Block Assembly with Captive Screws	40266-800-02	40266-800-02
Contact Block Mounting Screw (4 req'd)	28174-110-26	28174-110-26
Red Cross Bar with Cross Bar Screw	40266-464-06	40266-464-06
Red Cross Bar Only	40266-022-01	40266-022-01
Red Cross Bar Screw	28158-079-25	28158-079-25
Relay Cover Assembly with Screws	40266-800-01 (Type P) 40266-800-08 (Type PK)	40266-800-01 (Type P) 40266-800-08 (Type PK)
Relay Cover Screw (2 req'd)	28158-042-25	28158-042-25
Pneumatic Time-Delay Unit with Timing Assembly	700-PT (Type P) 700-PKT (Type PK)	700-PT (Type P) 700-PKT (Type PK)
Timing Assembly (including bellows)	40266-465-01	40266-465-01
Timer Unit Cover Assembly with Screws	40266-329-51	40266-329-51
Coil Clearing Cartridge and Wire with Terminals	40266-800-07	40266-800-07
Mechanical Latch Unit (including Unlatch Coil and Magnet Assembly)	700DC-PLL**	700DC-PLL**
Unlatch Coil and Magnet Assembly	See coil table	See coil table
Mechanical Latch Unit Cover Assembly with Screws	40266-329-52	40266-329-52

Operating Coils for 700 Type P & PK DC Relays

Catalog Number Coil Suffix Code	Volts	Main Operating Coil Part Number	Unlatch Coil and Magnet Assembly Part Number
Z1	115-125	PD735	PM735
Z2	230-250	PD748	PM748
Z06	6	PD703	PM703
Z08	8	PD705	PM705
Z5	500-550	PD759	PM759
Z6	575-600	PD758	PM758
Z12	12	PD708	PM708
Z16	16	PD711	PM711
Z18	18	PD712	PM712
Z24	24	PD714	PM714
Z32	32	PD718	PM718
Z48	48	PD724	PM724
Z64	64	PD727	PM727
Z72	72	PD730	PM730
Z90	90	PD732	PM732

Renewal Parts, 700 Type P & PK DC Relays, Mounting Hardware

Figure 2 – Exploded View of One, Two and Three-Deck Relays



Repair Parts for Figure 2

Single Deck Relay Components Part Description	AB Part Number	
	Series A	Series B
Base Assembly	700-P000*	700-P000*
Contact Block Assembly	40266-464-05	40266-464-05
Block Mounting Screw D (qty 4 req'd)	28174-110-26	28174-110-26
Contact Block Assembly with Captive Screws	40266-464-05	40266-464-05
Contact Cartridge	See page 1	See page 1
Coil	See coil table on page 2	See coil table on page 2
Red Cross Bar Assembly with Captive Screw	40266-464-06	40266-464-06
Red Cross Bar Only	40266-022-01	40266-022-01
Captive Cross Bar Screw B	28158-079-25	28158-079-25
Cover Assembly with Screws	40266-464-07 (Type P) 40266464-08 (Type PK)	40266-464-07 (Type P) 40266464-08 (Type PK)
Cover Screw A (2 req'd)	28158-042-25	28158-042-25

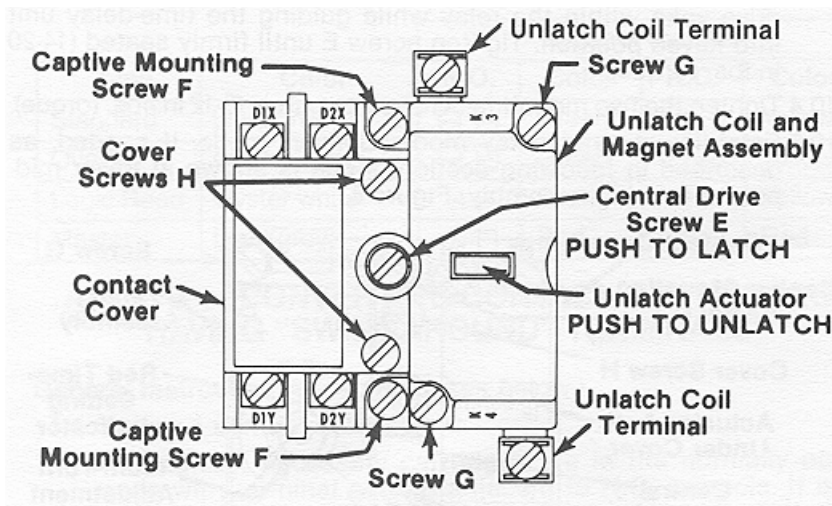
Second Deck Relay Components Part Description	AB Part Number	
	Series A	Series B
Captive Deck Mounting Screw C for Two-Deck Relay	28158-506-25	28158-506-25
Black Cross Bar for Second Deck	40266-025-01	40266-025-01
Second Deck Contact Block with screws, less contacts	700-PB00	700-PB00
Red Cross Bar Assembly with Captive Screw	40266-325-52	40266-325-52
Red Cross Bar Only	40266-022-01	40266-022-01
Captive Cross Bar Screw for Two-Deck Relay	28158-084-25	28158-084-25
Cover Assembly with Screws	40266-464-07 (Type P) 40266464-08 (Type PK)	40266-464-07 (Type P) 40266464-08 (Type PK)
Cover Screw Only (2 req'd)	28158-042-25	28158-042-25

Third Deck Relay Components Part Description	Part Number	
	Series A	Series B
Captive Deck Mounting Screw C for Three-Deck Relay	28158-507-25	28158-507-25
Black Cross Bar for Third Deck	40266-022-01	40266-022-01
Third Deck Contact Block with screws, less contacts	700-PC00	700-PC00
Red Cross Bar Assembly with Captive Screw	40266-325-53	40266-325-53
Red Cross Bar Only	40266-022-01	40266-022-01
Captive Cross Bar Screw for Three-Deck Relay	28158-504-25	28158-504-25
Cover Assembly with Screws	40266-464-07 (Type P) 40266464-08 (Type PK)	40266-464-07 (Type P) 40266464-08 (Type PK)
Cover Screw Only (2 req'd)	28158-042-25	28158-042-25

Renewal Parts, 700 Type P & PK DC Relays

Mounting Hardware

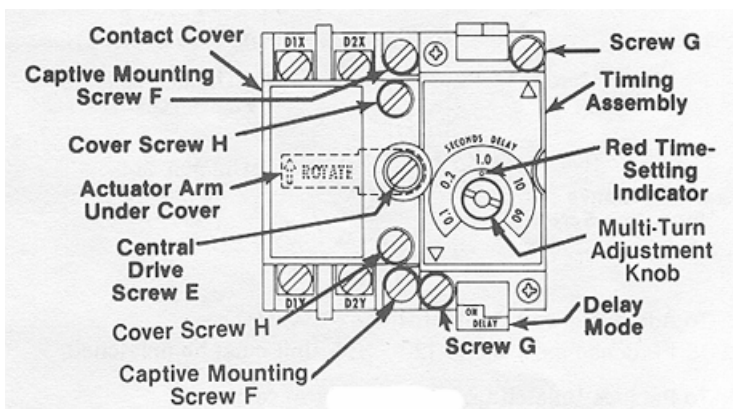
Figure 3 – Mechanical Latch Assembly



Repair Parts for Figure 3

Mechanical Latch Components Part Description	AB Part Number	
	Series A	Series B
Cover Assembly (includes contact cover and cover screws)	40266-329-52	40266-329-52
Contact Cover Only	40266-039-01	40266-039-01
Cover Screw H (2 req'd)	28157-053-25	28157-053-25
Captive Mounting Screw F (2 req'd)	28157-055-25	28157-055-25
Mounting Screw G (2 req'd)	28157-053-33	28157-053-33
Unlatch Coil Terminal	40014-015-02	40014-015-02
Central Drive Screw E	Not Available	Not Available
Unlatch Actuator	Not Available	Not Available
Unlatch Coil and Magnet Assembly	See coil table on page 2	See coil table on page 2

Figure 4 – Pneumatic Timer Assembly



Repair Parts for Figure 4

Pneumatic Timer Components Part Description	AB Part Number	
	Series A	Series B
Cover Assembly (includes contact cover and cover screws)	40266-329-51	40266-329-51
Contact Cover Only	40266-039-01	40266-039-01
Cover Screw H (2 req'd)	28157-053-25	28157-053-25
Captive Mounting Screw F (2 req'd)	28157-055-25	28157-055-25
Mounting Screw G (2 req'd)	28157-053-33	28157-053-33
Timing Assembly (including bellows)	40266-465-01	40266-465-01
Central Drive Screw E	Not Available	Not Available
Multi-Turn Adjustment Knob, Red Time-Setting Indicator	Not Available	Not Available

Important User Information

Because of the variety of uses for the products described in this publication, those responsible for the application and use of this control equipment must satisfy themselves that all necessary steps have been taken to assure that each application and use meets all performance and safety requirements, including any applicable laws, regulations, codes and standards.

The illustrations, charts, sample programs and layout examples shown in this guide are intended solely for purposes of example. Since there are many variables and requirements associated with any particular installation, Rockwell Automation does not assume responsibility or liability (to include intellectual property liability) for actual use based upon the examples shown in this publication.

Allen-Bradley publication SGI-1.1, *Safety Guidelines for the Application, Installation and Maintenance of Solid-State Control* (available from your local Allen-Bradley office), describes some important differences between solid-state equipment and electromechanical devices that should be taken into consideration when applying products such as those described in this publication.

Reproduction of the contents of this copyrighted publication, in whole or part, without written permission of Rockwell Automation, is prohibited.

Throughout this document we use notes to make you aware of safety considerations:

ATTENTION

Identifies information about practices or circumstances that can lead to personal injury or death, property damage or economic loss



IMPORTANT

Identifies information that is critical for successful application and understanding of the product.

Use only replacement parts and devices recommended by Rockwell Automation to maintain the integrity of the equipment. It is the user's responsibility to ensure that the renewal part number selected is properly matched to the model, series and revision level of the equipment being serviced.

ATTENTION

Servicing energized Industrial Control Equipment can be hazardous. Severe injury or death can result from electrical shock, burn, or unintended actuation of controlled equipment. Recommended practice is to disconnect and lockout control equipment from power sources, and release stored energy, if present.



Refer to **National Fire Protection Association Standard No. NFPA70E, Part 2 and (as applicable) OSHA rules for Control of Hazardous Energy Sources (Lockout/Tagout) and OSHA Electrical Safety Related Work Practices** for safety related work practices, including procedural requirements for lockout/tagout, and appropriate work practices, personnel qualifications and training requirements where it is not feasible to de-energize and lockout or tagout electric circuits and equipment before working on or near exposed circuit parts.

ROCKWELL DISCLAIMS ALL WARRANTIES WHETHER EXPRESSED OR IMPLIED IN RESPECT TO THE INFORMATION (INCLUDING SOFTWARE) PROVIDED HEREBY, INCLUDING THE IMPLIED WARRANTIES OF FITNESS FOR A PARTICULAR PURPOSE, MERCHANTABILITY, AND NON-INFRINGEMENT. Note that certain jurisdictions do not countenance the exclusion of implied warranties; thus, this disclaimer may not apply to you.

Allen-Bradley is a trademark of Rockwell Automation